



**Address**

Suite 409 Portal West  
 Silliman Avenue  
 Dumaguete City  
 Negros Oriental  
 Philippines. 6200

**Contact**

Phone : +63 (35) 422-9091  
 Phone 2 : 0995-662-6181

**Social**

Url : [www.dumaguete-kitchen-cabinets.com](http://www.dumaguete-kitchen-cabinets.com)  
 Email : [info@dumaguete-kitchen-cabinets.com](mailto:info@dumaguete-kitchen-cabinets.com)  
 FB : [@dumaguete-kitchen-cabinets](https://www.facebook.com/dumaguete-kitchen-cabinets)



DUMAGUETE Kitchen Cabinet  
**CATALOG**



[www.dumaguete-kitchen-cabinets.com](http://www.dumaguete-kitchen-cabinets.com)

# TABLE OF CONTENTS

## 1 KITCHEN DESIGN

- 1-2.....Kitchen Design
- 3.....Choose Yourstyle



## 4 CABINET BOARD TYPES

- 4.....Medium Density Fiber Board(MDF)
- 5.....Laminated Marine Plywood
- 6 .....Laminated Particle Board
- 7-10.....Board Color Samples



## 11 COUNTERTOP STONES

- 11.....Quartzstone
- 12..... Granite



## 13 ACCESSORIES

- 13-14....Cabinet Accessories



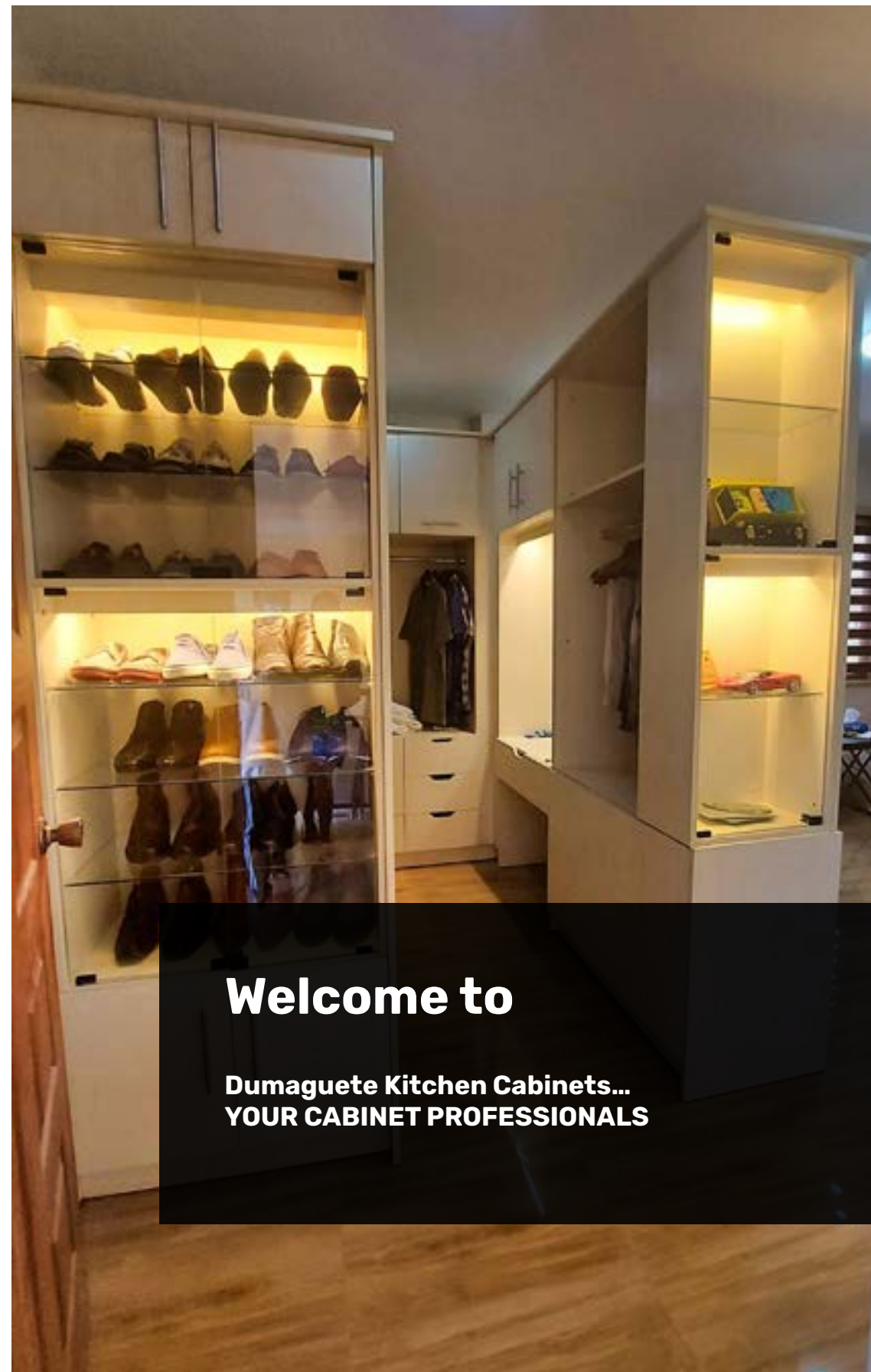
## 15 RECENT PROJECTS

- 15.....Recent Projets



**Welcome to**

**Dumaguete Kitchen Cabinets...  
YOUR CABINET PROFESSIONALS**





# KITCHEN DESIGN

## GALLERY KITCHEN

THIS LAYOUT IS USED PARTICULARLY IN COMMERCIAL KITCHENS WHERE IN THE COOKING AREA AND APPLIANCES ARE FACING EACH OTHER IN A NARROW SPACE. IF YOU'RE PREPARING FOOD TOGETHER WITH A NUMBER OF PERSONS THIS IS A GREAT LAYOUT SINCE YOU'LL BE LINED UP CLOSE TOGETHER.



## HORSESHOE/ U SHAPED KITCHEN

IS A COMMON KITCHEN LAYOUT, IT IS DESIGNED AS ONE PRIMARY COOK, WHERE YOU HAVE YOUR COOKING, STORING, AND SINK ARE ALL AT ONCE IN A U-SHAPED AREA. THIS LAYOUT MIGHT BE GOOD IN MULTI-TASKING YET SOMETIMES THE PROBLEM IS IF YOU HAVE A SMALL AREA PUTTING YOUR DINING TABLE MIGHT BE A PROBLEM.



## ISLAND KITCHEN

TODAY, MOST OF THE HOME OWNERS ARE USING THIS TYPE OF LAYOUT ONE BECAUSE IT IS ON TREND AND IT GIVES A LOT OF ADVANTAGE IN TERMS OF STORING, SPACE AND MULTI-TASKING. THIS IS BEST IF YOU WANT TO HAVE A QUALITY TIME WITH FAMILY WHILE COOKING BECAUSE THIS KITCHEN DESIGN OPENS A DIALOGUE BETWEEN THE LIVING ROOM AND THE KITCHEN.



## L-SHAPED KITCHEN

THIS KITCHEN LAYOUT IS THE MOST USED LAYOUT IN EVERY HOUSEHOLD, WITH SHAPED LIKE A LETTER "L" WHERE APPLIANCES AND COOKING AREA ARE POSITIONED ON THE LONGER SIDE AND THE SINK IN THE SHORTER SIDE WITH STORAGE CABINETS PLACES ON THE UPPER AND LOWER PART OF THE KITCHEN.

## ONE-WALL KITCHEN

JUST LIKE THE U-SHAPED KITCHEN THIS IS DESIGNED TO HAVE THE COOKING, STORING, AND SINK AREA IN ONE SETTING YET DESIGNED AS A VERTICAL WORKING PLACE, WITH THIS LAYOUT YOU CAN HAVE A MORE SUFFICIENT AREA FOR YOUR OTHER DINING STUFF.





## CHOOSE YOUR STYLE

### LOUVERED STYLE

Louvered Style - this style is commonly seen in the island and decorative cabinet with horizontal; wood slate designs commonly seen in window blinds.

This design is great for cabinet that need ventilation

### GLASS FRONT STYLE

Glass Front Style - This kitchen cabinet design pertains to cabinet with glass covers, this design comes along with all type of color and designs and adds up gloss and sophistication to your kitchen

### SLAB KITCHEN STYLE

Slab Kitchen Style - this style is minimal, modern, and clean look with flat cab nets that can be paint or lacquer finished, this style is mostly inexpensive and requires less materials and labor. This is ideal if you're trying to save space in a classy and organized way

### TRADITIONAL STYLE

Traditional Style - by the name traditional it is the most common kitchen style but as the years go by a new trend of a traditional kitchen is emerging, by mixing one design to another. But the concept of employing the details of legs and pilasters on the island, custom wood hood, and other eye-catching design is still present.

## CABINET BOARD TYPES

1. MDF (Medium Density Fiber Board)
2. Laminated Marine Plywood
3. Laminated Particle Board

### 1). MDF(Medium Density Fiber Board)

is an engineered wood product made by breaking down hardwood or softwood residuals into wood fibres, often in a defibrator, combining it with wax and a resin binder, and forming it into panels by applying high temperature and pressure.

Available in 2 types of Finish,. 1 Side is Matte and 1 side is Glossy

Dimensions: 3/4 " Thick x 4 ft x 8ft

**Note:**

Size: 4ft x 8ft /BOARD





## 2). Laminated Marine Plywood

Plywood is the most common material used not only in cabinet making but also in construction. This material can easily be found in every hardware, but customers must be meticulous in choosing what kind of plywood to purchase because its durability differs with its thickness. Plywood is composed of layers of wood joined together in an adjacent layer with glue and heat press, right ratios are easily achieved with this cabinet material.

**Note:**

Size: 4ft x 8ft /BOARD



## 3). Laminated Particle Board

In most department stores finding cabinets made from particle board is common, cheaper than MDF yet with less durability. Particle board is made with recycled products formed together through pressing and finished with a wood veneer. This type of material is ideal for furniture cabinets, where you store dry goods or other kinds of stuff since this kind of cabinet is sensitive to water and moisture. This might be a less durable material but still ideal for a customer who is good in handling and caring furniture.

**Note:**

Size: 4ft x 8ft /BOARD





# CABINET BOARD COLOR SAMPLES



1  
DARKSTIPELINE-  
DS-9986



2  
ZH-1805  
TORTILLA  
GLOSSY



3  
ZH-1801  
BRUNETTE  
GLOSSY



4  
SEAL GRAY  
DS-9016



5  
GH9003  
CHAMPAGNE  
GLOSSY



6  
CH-1810 WOODY  
OAK GLOSSY



7  
ZH-3919 APPLE  
GREEN GLOSSY  
18MMX4X8FT



8  
LIGHT ZEMBRANO  
DS9596  
18MM PB  
3MM MDF



9  
ZENIA  
18MM PB  
3MM MDF



10  
GREY OAK  
DS9454



11  
LIGHT ZEMBRANO  
DS9596



12  
WARM WHITE EMB  
DS9047



13  
DARKSTIPELINE  
DS9986



14  
DARK OAK DS9103



15  
NATURAL OAK  
DS96151



16  
BAMBOO DS914210



17  
ACAIA



18  
WARM WHITE EMB  
DS9047



19  
MAPLE DS9128



20  
DARKSTIPELINE  
DS9986



21  
DARKSZEMBRANO  
DS9596



22  
DARKSTIPELINE  
DS-9986



23  
WHITE WASH  
DS9333



24  
GREY OAK DS9454



25  
ZENIA



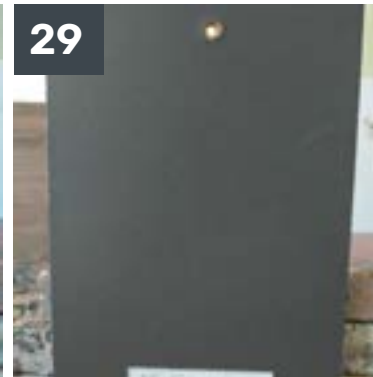
26  
VINTAGE GREY  
DS9437



27  
MODERN WENGUE  
9142



28  
MODERN WENGUE  
DS-9142



29  
DARK GRAY  
HSA05



30  
CHERRY DS91344



31  
DARKSTIPELINE  
DS9986



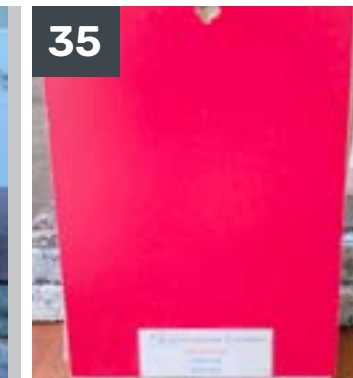
32  
LIGHT ZEMBRANO  
DS9596  
18MM PB  
3MM MDF



33  
WARM WHITE EMB  
DS9047  
18MM x4 x8  
3MM 4x8



34  
BEECH DS9212



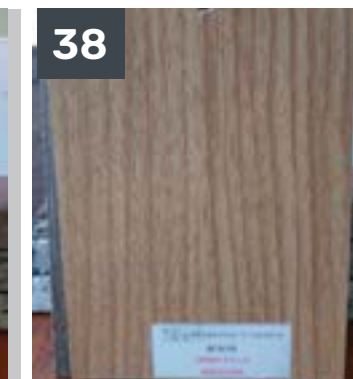
35  
RED ROUGH



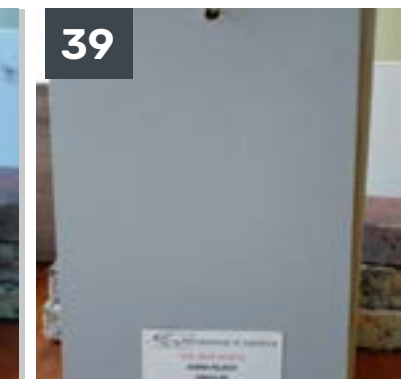
36  
MILKY WHITE  
DS9047



37  
JOLINA LINE  
DS9985



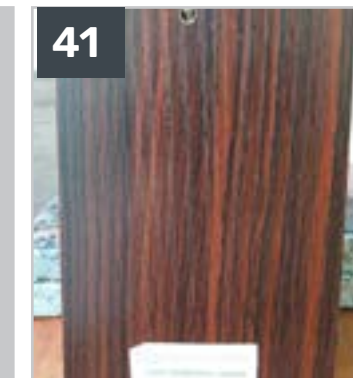
38  
ACAIA



39  
SEAL GRAY DS9016



40  
ALFARO DS9916



41  
LIGHT ZEMBRANO  
DS9596



# Countertop Stone Types

2 Types of Stones:

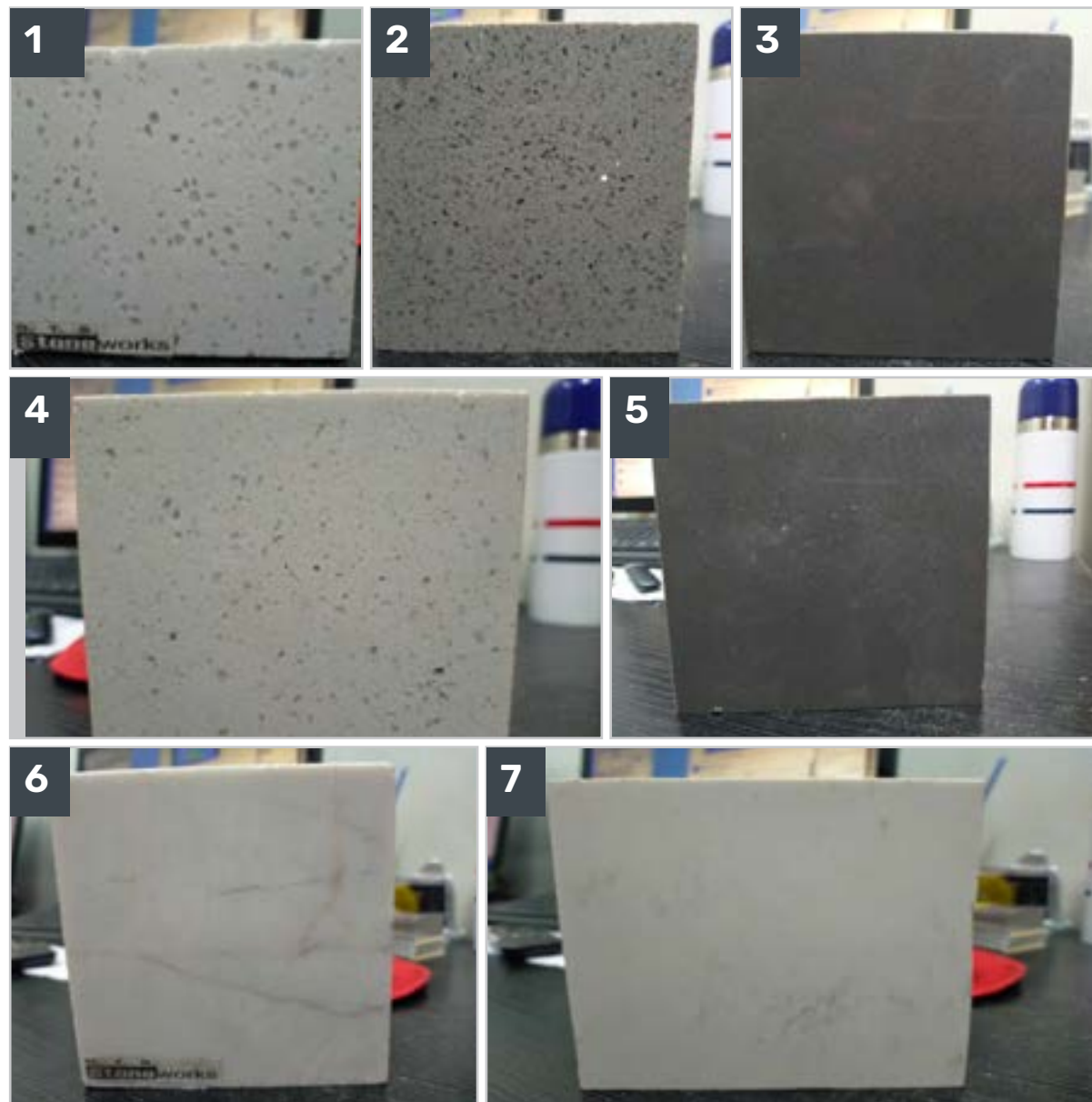
- 1. Quartzstone
- 2. Granite

## 1). Quartz Stone

Available in Various Color

Dimensions: 2cm thick x 140cm (wide) x 300cm (length)

Samples:

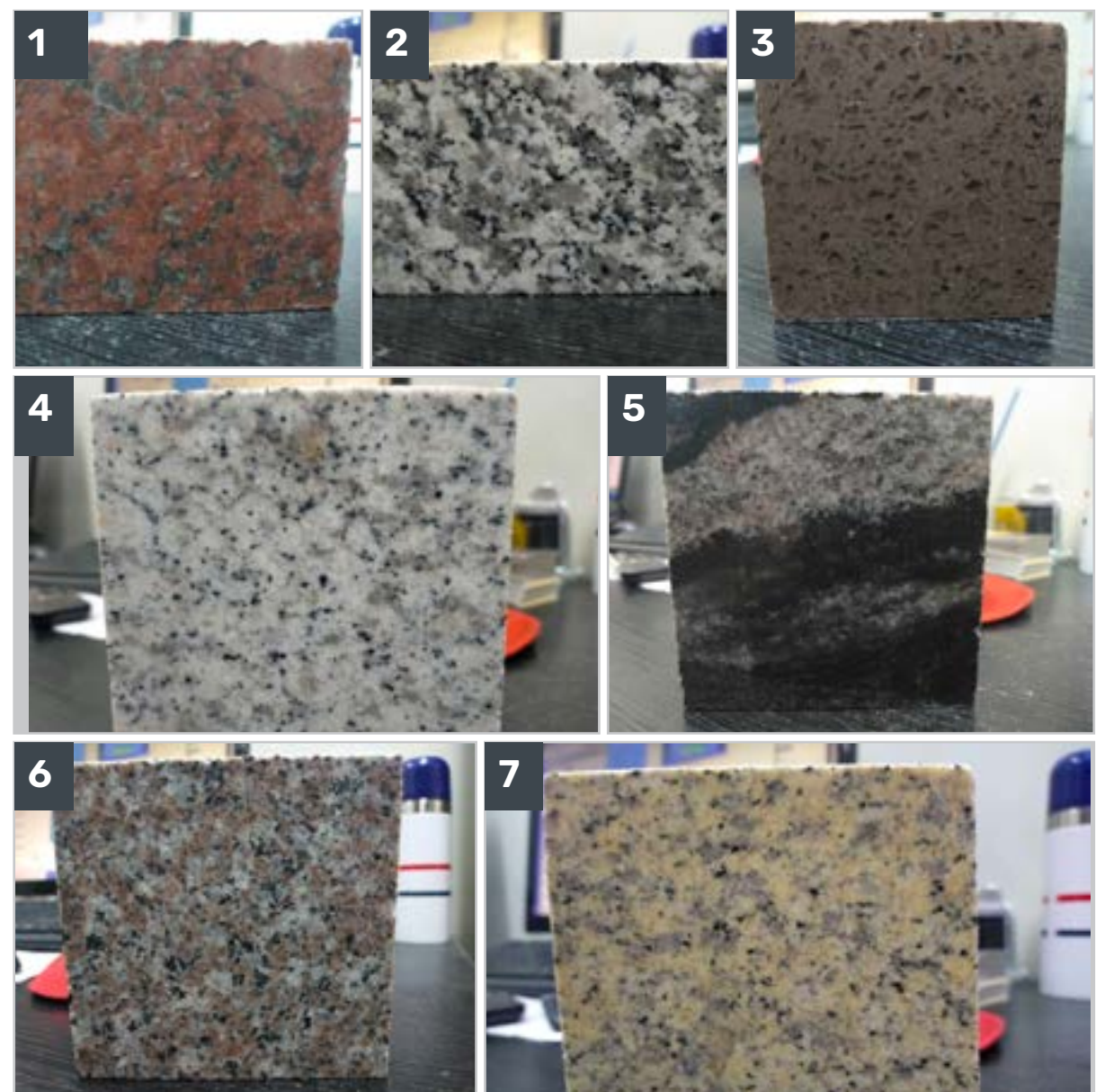


## 2). Granite Stone

Available in Various Color

Dimensions: 2cm thick x 60cm (wide) x 240cm (length)

Samples:





## Accessories

### HINGE CORNER TURN OUT SHELF

Corner turnout shelves shaped and sized to custom fit within a corner base cabinet can be attached with glides, allowing you to easily pull out their shelf to access contents.



### CUTLERY AND KNIFE BLOCK DRAWER

CUTLERY AND KNIFE BLOCK DRAWER

In addition to the plastic or wire cutlery tray dividers that most people get for at least one drawer, the cutlery/knife block drawer system replaces the entire drawer and gives you a complete built in cutlery/knife block drawer.



### DRAWER PEG SYSTEM

If you're the type of person who prefers all drawer bases for your kitchen cabinetry to the more traditional door/drawer combination, then the drawer peg system is a must-have for you. It comes with adjustable pegs that you can easily place wherever you need them so you can keep all your plates and bowls in their place without any kind of sliding around.



### DRAWER STORAGE

Large deep drawers are places to store pots, pans, baking dishes and even everyday china. Drawer accessories include:

- Moveable Dividers
- Small apothecary drawers
- Knife blocks and cutting board pullouts
- Spice drawer insets
- Compartmentalized drawer dividers
- Silverware storage organizers
- Wood organizers for dish storage
- Slide out interior doors for cabinets



### BLIND CORNER PULL OUT SHELVES

This pull out serves the same purpose as the traditional roll out and makes the cabinet space much more usable. As you can see in the image above, instead of the large open space where things get placed and forgotten about, the blind corner pull out makes them all visible and easily accessible.



### ROLL-OUT PANTRY

A roll-out pantry eliminates the hardships of maintaining a neat and well-organized storage space. Functioning and appearing similar to a spice rack, its robust storage eliminates issues of having to keep your perishables arranged during and outside of use. It also pairs well with a walk-in pantry, allowing you to commit the roll-out to pots and pans for fast access.



### WALL CABINET PANTRY

Wall cabinet pantries represent the most widespread standard in kitchens throughout the U.S. Convenient storage for your non-perishables allows you to jump right into cooking without needing to run back and forth to storage space in a different room. Beyond that, it also allows you to be more dynamic in your food preparation, grabbing new ingredients or specialty tools on the fly as inspiration takes you.





## Recent Projects

### LUCKY AND NORLYN'S ATTRACTIVE KITCHEN

Lucky and Norlyn were just getting ready to move into their new home and wanted to have an attractive kitchen to go with the rest of their great house. We designed and built them this great workable kitchen and we are sure they will spend many hours enjoying cooking in this kitchen in their new house.



## Attractive Kitchen Gallery Details

### Specifications

Client name	Lucky and Norlyn
Location	Dumaguete
Purpose	Kitchen
Cabinetry style	Classic Filipino

### Materials

Basebox	Matte White Plywood
Faces	Alfaro Plywood
Countertops	Granite
Hinges	Pneumatic & soft close
Drawer sliders	Soft close
Handles	Brushed stainless steel

### Configuration

Storage accessories	N/A
Water protection	N/A
Storage windows	N/A
Backsplash	N/A
Countertop drainage angle	3°
Countertop overhang	150mm
Storage size	7.5 m <sup>3</sup>
Life Expectancy	15 Years



# Lyndon's Kitchen and Closet Cabinets

Lyndon needed both Kitchen and closet cabinets and he came to the right place at Dumaguete Kitchen Cabinets. We had our design team come up with some spectacular ideas, and after the go ahead our fabrication and installation workers finished the job flawlessly. The result was nothing short of beautiful. We were happy and proud to be part of this project!



# Attractive Kitchen Gallery Details

## Specifications

Client name	Lyndon
Location	Dumaguete
Purpose	Kitchen and Closet
Cabinetry style	Classic

## Materials

Basebox	Alfa Matte & White wash particle board
Faces	Alfa Matte & White wash MDF
Countertops	Quartz
Hinges	Pneumatic & soft close
Drawer sliders	Soft close
Handles	Brushed stainless steel

## Configuration

Storage accessories	N/A
Water protection	Penolic Board
Storage windows	N/A
Backsplash	Tile
Countertop drainage angle	3°
Countertop overhang	150mm
Storage size	16.4 m <sup>3</sup>
Life Expectancy	15 Years



# Roger's Custom Cabinets

When Roger was looking for custom cabinets for his home, he had to look no further than Dumaguete Kitchen Cabinets. After meeting with the client and taking measurements, our skilled design team and dedicated cabinet workers designed, fabricated and installed a kitchen that will be enjoyed for years to come. We were proud to have been able to make his dreams come true!



# Attractive Kitchen Gallery Details

## Specifications

Client name	Roger
Location	Dumaguete
Purpose	Kitchen
Cabinetry style	Classic

## Materials

Basebox	Matte White Plywood
Faces	Alfaro Plywood
Countertops	Quartz
Hinges	Pneumatic & soft close
Drawer sliders	Soft close
Handles	Brushed stainless steel

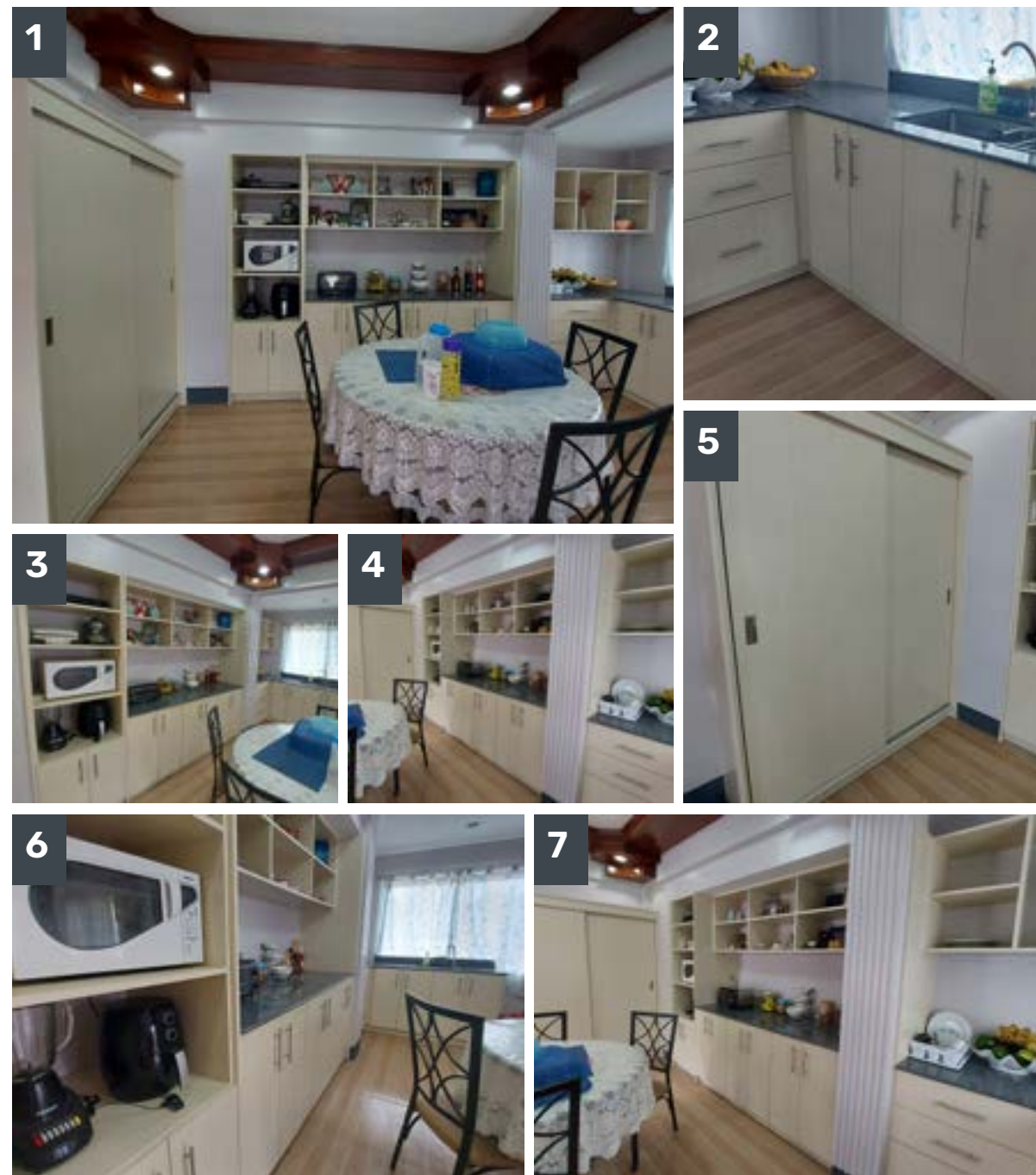
## Configuration

Storage accessories	N/A
Water protection	Penolic Board
Storage windows	N/A
Backsplash	Tile
Countertop drainage angle	3°
Countertop overhang	150mm
Storage size	7.2 m3
Life Expectancy	15 Years



## Ely's Exciting Kitchen

Ely owns an apartment rental complex, but has one large two story home for herself. She wanted the main living space to stand out so ask Dumaguete Kitchen Cabinets to design, build and install a set of cabinets that would make here home into some special. We were happy to oblige and the result was a beautiful set of cabinets that made here house truly special and enjoyable



## Attractive Kitchen Gallery Details

### Specifications

Client name	Ely
Location	Dumaguete
Purpose	Kitchen
Cabinetry style	Classic

### Materials

Basebox	White wash particle board
Faces	White wash MDF
Countertops	Quartz
Hinges	Pneumatic & soft close
Drawer sliders	Soft close
Handles	Brushed stainless steel

### Configuration

Storage accessories	Dish racks and utensil tray
Water protection	Penolic Board
Storage windows	N/A
Backsplash	N/A
Countertop drainage angle	3°
Countertop overhang	150mm
Storage size	8.2 m3
Life Expectancy	15 Years